

Dusty Prairie Ranch

Saturday, December 9, 2023 - 1:00 pm

Tri-State Livestock - McCook, NE



***Don't Miss Out
On This
Great Opportunity!***



***Some of the
Best Females
To Ever Sale!***

SELLING 200+ HEAD:

**H
C**

AMERIFAX

Saturday, December 9, 2023

**H
C**

★ **Retirement Female Sale** ★

- ★ 45 Plus Years of Breeding Amerifax Cattle
- ★ 1st Time Every DPR Genetic Female Offered For Sale!!
- ★ These Females will be some of the BEST — Deep Ribbed, Wide Based, Disposition, Maternal Females Offered For Sale!
- ★ Several Donor Cows For Sale
- ★ Annual Bull Sale April 6th, 2024

This sale will be broadcast live on the internet.

DVAuction

www.DVAuction.com

www.dustyprairieranch.com



Harsh Family



Dusty Prairie Ranch

Welcome Friends and Valued Customers,

I would like to invite you to the **first time Dusty Prairie Ranch** has offered mature females at a public auction! This **Retirement Auction** is a great opportunity to add some of the **best maternal females** in the USA! In 45 plus years, our program has been to sell bulls and a few yearling heifers at our annual production sale. At no time in the past has the blood, sweat and heart of the cowherd ever been available. So, to write this introduction letter on one page is impossible. If you really want to understand what I've done to build this cowherd and what I've tried to accomplish, pick up the phone and call. With a **one-on-one conversation** I can tell you more what these genetics can do.

I purchased my first Amerifax bull in 1977 to run on an Angus base cowherd, and in 1978 I ended up buying 2 more. Early on, I purchased females and semen from several other breeders to see what bloodlines **worked in SW Nebraska**. Through the first 10-15 years, it was like a research ranch to find bloodlines were doing what I had envisioned. The past 20+ years it has been a program to produce the best maternal cattle with less labor and overall resources! The cattle are bred to calve, raise a big calf, breed back and last a long time. At DPR cows have elite udder quality and mothering ability to get that calf up and get their first suck when it's born in a blizzard. Cows with great disposition that one can easily tag a calf and **do it by yourself**. Our disposition is some of the best you'll find anywhere!

Using our own herd bulls the past 20 years has narrowed the gene pool and ultimately built unbelievable uniformity, female productivity, and known udder quality. There are cattle in this sale that are 4-5 and some cases 6 generations of DPR bred by more DPR. In that work, the females are bred and cultured to eat roughage all year with an occasional protein source to stay in great BCS. And those who are looking for a single generation maternal makeover should identify Polled Turepo 1377.

In the recent years, we have purchased some of the top quality Angus and Amerifax females to get a direct comparison to our own. We have AI'd to some of the **top indexing bulls** and on an honesty scale, they are only in the **top 1/3 compared** to our own genetics. So what does that have to say? DPR has produced more productive cattle than any EPD genetic profile could ever forecast. So purchase with confidence. My belief, not using EPD's has made me a better cattle breeder to make my next generation better year after year. Our production sale has many repeat buyers and to this past year, all but one was a repeat buyer. We retain ownership on our steers for over 35 years and the past 4 groups **went 95%, 92%, 91% and 87% choice.**

Where do these cows go from here is anybody's guess, but what I hope is that you work with Gavin and I to continue this gene pool at the **43rd Bull Sale April 6th**. Any of you young producers, I wish I had this opportunity to start with a genetic base like this. Much of the work has been done and are ready for someone to build on for the next 20-30 years. We look forward to having you join us sale day and working with you on your purchase.

DUSTY PRAIRIE RANCH

Doug

Thanks For All Of The Support Over 45 Years!

PLEASE BRING THIS CATALOG WITH YOU SALE DAY

Dusty Prairie Ranch

RETIREMENT FEMALE SALE

December 9, 2023 — 1:00 p.m. Central Time

Tri-State Livestock • McCook, Nebraska

200 HEAD SELLING

Mature Females • Heifer Calves • Bred Heifers

Cows Are Due February 28th



DOUG'S CELL PHONE..... (308) 350-2500
DUSTY PRAIRIE RANCH (308) 350-2500
BRETT'S CELL..... (308) 293-7924
NATHAN'S CELL (817) 600-9102
GAVIN'S CELL..... (308) 340-7178

AUCTIONEER:

Jay Elfeldt..... (308) 293-3049

SALE REPRESENTATIVE:

Spenser Shifflet (308) 883-0949
Randy Rasby (308) 539-6195

SALE VETERINARIAN:

Dr. Nathan Hopkins..... (308) 920-3047

ACCOMMODATIONS:

Cobblestone Hotel..... (308) 777-2000
Holiday Inn Express..... (308) 345-4505
Days Inn..... (308) 345-7115

AIR TRANSPORTATION:

McCook Municipal Airport
(Denver Air) 855-268-8478

**All Cows Were Preg Checked on November 13th
and Vaccinated With:**

**Vira Shield 6+ VL5, Injectable Dectomax
and Poured with Clean-Up**

2023 Heifers:

**Had 1 Spring Shot
N-Force at Weaning
and Vista 5 Booster**

**Bred Heifers will have a Supplement Sheet on sale day
with AI Dates, Sires and Clean-Up Bull**

Ranch Location Map

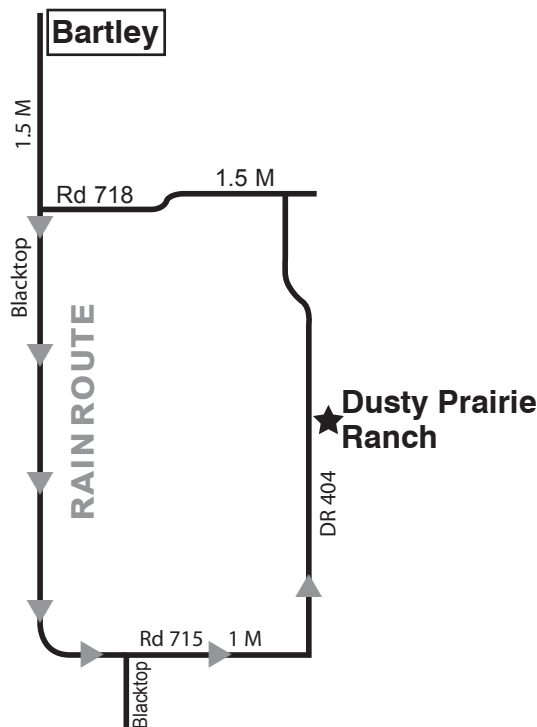
Bid Live on Sale Day ***DVAuction***

Visit www.DVAuction.com and Register Today

For General Questions

Please Contact (402) 316-5460 or support@dvauction.com

Be sure to register in advance for a buyer number.



REFERENCE SIREs



DUSTY PRAIRIE RANCH

A

Polled Turepo 1377

Calved 4-30-1986

Purebred B.F.

Turepo King Adema

Grove Adema 2nd

Turepo Regal Queen

Miss Dividend G33N

Troycastle Gymnast 68

Miss Dividend 33G

Birth Wt.	Calving Ease	205 Adj. Wt.	365 Adj. Wt.	90-Day Gain	Pelvic Msrmt.	Scrotal Msrmt.	P/Sc or H
75	Un	761	1377				P

As our Senior Herd Sire, this purebred Beef Friesian bull has proven himself to be a consistent producer of top quality progeny. He excels across the board from birth weight to yearling weight and also produces superior females with picture perfect udders.

DUSTY PRAIRIE RANCH

B

DPR Impact BL 195

Calved 3-19-2015

7/16 BF 9/16 AN

DPR Mr Classy TH93

DPR Classy 5250

DPR Miss Big & Wide (TH9)

DPR Super 5134

DPR Miss 5134 Super (Blue 19)

DPR Miss 47TKA 4390 (Blue 5)

Birth Wt.	205 Adj. Wt.	365 Adj. Wt.	90-Day Gain	Pelvic Msrmt.	Scrotal Msrmt.	P/Sc or H
83	701	1202				P

DPR Impact does just what his name says. He stamps his calves with a tremendous amount of rib, bone and docility. His genetics make a great outcross to any Solution, Ali, or Ideal pedigrees!

DUSTY PRAIRIE RANCH

C

DPR Mr. Dynamic B257

Calved 2-22-2017

7/16 BF 9/16 AN

DPR Solution 6674

DPR Solution 9320

DPR Miss Ideal (667)

DPR Miss 1501 Moneyman

DPR 6290 Moneyman 1501

(BL 25) DPR Miss 6290 Moneyman (BL 18)

Birth Wt.	Calving Ease	205 Adj. Wt.	365 Adj. Wt.	90-Day Gain	Pelvic Msrmt.	Scrotal Msrmt.	P/Sc or H
77	Un	701	1381				P

The most impressive bull of the 2018 bull sale that just overwhelms in guts, width and power that comes in a light birth weight package! The Dynamic calves come easy, get up and grow! A bull that posted a REA Ratio of 107 and IMF Ratio of 151.



DUSTY PRAIRIE RANCH

D

DPR 8141 Justice 6022

Calved 3-4-2012

1/2 BF 1/2 AN

DPR Mr Justice 8141

DPR Super J 290

DPR Miss Ideal (141)

DPR Miss Moneyman (602)

DPR Moneyman 6349

DPR Miss Sleep at Night (369)

Birth Wt.	Calving Ease	205 Adj. Wt.	365 Adj. Wt.	90-Day Gain	Pelvic Msrmt.	Scrotal Msrmt.	P/Sc or H
88	Un	649	1200	4.46	209	42.0	P

DPR Justice Jr. - A bull we purchased back from the Ellicott Ranch after seeing his calves unmatched length and performance. In our 2013 sale, he was the #4 IMF bull and he has passed that onto his progeny. Many sons have been top ratioing bulls for IMF, ADG, and REA. A progressive carcass bull that is backed by a maternal, nicely uddered cow in DPR Miss 6349 Moneyman (602).

DUSTY PRAIRIE RANCH

E

DPR Sleep EZ BL269

Calved 3-11-2019

9/16 BF 7/16 AN

DPR Explosion 3527

DPR Solution 9320

DPR Miss Solution (G352)

DPR Miss 361 Ali (Blue 26)

DPR Mr. Ali 361

DPR Miss 47TKA 4390 (Blue 5)

Birth Wt.	Calving Ease	205 Adj. Wt.	365 Adj. Wt.	90-Day Gain	Pelvic Msrmt.	Scrotal Msrmt.	P/Sc or H
71	Un	713	1276	3.84		37.0	P

A light birthweight outcross sire, DPR Sleep EZ 269 is a phenotype stand out. A clean shouldered, bold ribbed bull that is extremely athletic. His dam is one of the elite females at DPR--her first five calves ratioed 95 for birth with a nurse ratio of 106!

DUSTY PRAIRIE RANCH

F

DPR Justify 3528

Calved 3-22-2018

7/16 BF 9/16 AN

DPR 8141 Justice 6022

DPR Mr. Justice 8141

DPR Miss Moneyman (602)

DPR Miss Solution (352)

Schurrtop 9447 726

DPR Ms 1499 Thick (320)

Birth Wt.	Calving Ease	205 Adj. Wt.	365 Adj. Wt.	90-Day Gain	Pelvic Msrmt.	Scrotal Msrmt.	P/Sc or H
84	Un	803	1383				P

The highest performance bull of the 2018 calf crop with a weaning weight of 803 (ratio 123) and yearling weight of 1383 (ratio 112). His progeny topped the scales in 2021 building a weaning ratio of 107. Maternally his first daughters retained all calved first cycle and are outstanding mothers. Find his progeny to inject pounds into your calf crop!



DUSTY PRAIRIE RANCH

G

DPR Solution 9320

Calved 3-2-2009

3/8 BF 5/8 AN

Schurrtop 9447 C726
Blevins Schurrtop Solution
Schurrtop 3107 V124
DPR 3D Thick 1449
DPR Ms 1449 Thick (320)
DPR Miss Turepo (283)

Birth Wt.	Calving Ease	205 Adj. Wt.	365 Adj. Wt.	90-Day Gain	Pelvic Msrmt.	Scrotal Msrmt.	P/Sc or H
65	Un	707	1230	4.89	195	39.0	P

DPR Solution 9320 is the most modern framed, easy fleshing bull ever used at DPR. Many of his sons can be used on heifers. The amount of depth of rib he sires in his progeny will give you some easy fleshing cattle in your operation!!



DUSTY PRAIRIE RANCH

H

DPR 9320 Solution 6674

Calved 2-17-2014

3/8 BF 5/8 AN

DPR Solution 9320
Schurrtop 9447 C726
DPR Ms 1449 Thick (320)
DPR Ideal 692 of 2295
DPR Miss Ideal (667)
DPR Miss Ideal (26)

Birth Wt.	205 Adj. Wt.	365 Adj. Wt.	90-Day Gain	Pelvic Msrmt.	Scrotal Msrmt.	P/Sc or H
78	680	1248				P

Photo was taken at six years of age and in his everyday clothes....right out of the corn stalks. DPR 9320 Solution 6674 is one of the most complete herd bulls ever produced at DPR. A true calving ease bull with **No Calves Ever Assisted**. A moderate framed easy fleshing bull. His deep ribbed daughters are truly impressive! All his steers have graded Choice or Better.



DUSTY PRAIRIE RANCH

I

DPR Amplify H123

Calved 2-21-2021

7/16 BF 9/16 AN

DPR Justify 3528
DPR 8141 Justice 6022
DPR Miss Solution (352)
DPR Mr. Thunderbird 3242
DPR Miss 3242 Thunderbird (Blue 23)
DPR Miss 5250 Classy (Blue 20)

Birth Wt.	Calving Ease	205 Adj. Wt.	365 Adj. Wt.	90-Day Gain	Pelvic Msrmt.	Scrotal Msrmt.	P/Sc or H
85	Un	740	1310				P

BL123 - A bull who had herd bull written all over him since he was a calf! Combining DPR Miss Thunderbird and DPR Justify is a powerful pedigree that adds length, pin width and athleticism. An outstanding footed bull that carries the Justice heritage of adding true performance.



DUSTY PRAIRIE RANCH

J

DPR Expressway B1178

Calved 2-20-2021

1/2 BF 1/2 AN

DPR Sleep EZ BL269
DPR Explosion 3527
DPR Miss 361 Ali (Blue 26)
DPR Miss 6022 Justice (BK178)
DPR 8141 Justice 6022
DPR Miss 5134 Super (BK19)

Birth Wt.	205 Adj. Wt.	365 Adj. Wt.	90-Day Gain	Pelvic Msrmt.	Scrotal Msrmt.	P/Sc or H
68	687	1202				P

B1178 - A phenotypic stand out of the 2021 calf crop and he has truly surprised us in his extreme versatility. A light birthweight bull to can be used on heifers scanned the top REA and 4th highest IMF of the 2022 bulls. Truly a rare combination!



DPR Miss 3242 Thunderbird (TH31)

1 DPR 3242 Thunderbird (TH31)
Cow - TH31 Born: 2015 7/16 BF 9/16 AN

DPR Mr. Thunderbird 3242 SAV Thunderbird 9061 (G324)
 DPR Miss Profitability H3140 (TH28) DPR Mr. Profitability H3140
 DPR Miss Choice (BR15)

TH 31 – An absolute silhouette cow that strikes you with her length, volume, and excellent foot quality. There are 9 daughters retained of Mr. Thunderbird 3242. Dam raised a top selling bull in 2021 selling for \$10,000 to Kenny Gullickson of ND.



Lot 3 Full Brother -- DPR 9320 Solution 6674

3 DPR Miss 9320 Solution (G768)
Cow - G768 Born: 2017 3/8 BF 5/8 AN

DPR Solution 9320 Schurrtop 9447 C726
 DPR Ms 1449 Thick (320)
 DPR Miss Ideal (G667) DPR Ideal 692 of 2295
 DPR Miss Ideal (Blue 26)

G768 – An ultra unique offering of a cornerstone cow and mating. A full sister to both calving ease specialist in DPR Solution 6674 and DPR Jackpot 6679. Another cow that is open and ready to flush. Flush her to a light birthweight sire and build your next line of heifer safe bulls. See her daughters in Lots 14 and 24.



DPR Miss 9969 Rito (740)

2 DPR Miss 9969 Rito (G740)
Cow - G740 Born: 2015 3/8 BF 5/8 AN

SAV 707 Rito 9969 Rito 707 of Ideal 3407 7075
 BR Polly 8077-472
 DPR Miss Classy (O317) DPR Classy 5250
 DPR Miss Turepo (O229)

G740 – A powerhouse cow that is open and ready to flush! Those looking to inject raw growth, thickness and power into their cowherd need to find this Rito 9969 sired cow. Her thickness is well illustrated in her powerful DPR Justify daughter in Lot 12.

4 DPR Miss 2776 Solution (G810)
Cow - G810 Born: 2019 1/2 BF 1/2 AN

DPR Total Solution 2776 DPR 9320 Solution 6674
 DPR Miss Classy (O277)
 DPR Miss 6674 Solution (G765) DPR 9320 Solution 6674
 DPR Miss Choice 314

G810 – A young cow coming from one of the most storied maternal cow families in DPR Miss Choice 314. Miss Choice 314 coming from a winning pen of 3 at the Denver Stock Show in the 90's story continues. Miss Total Solution 810 is long, deep and will pass highly desired udders to her progeny.

As I've gotten older, purchasing a bull with a Great Disposition is worth \$5,000 - \$10,000, on that trait alone, if you are keeping daughters to retain in your herd.

Doug



Sire of Lot 5 -- DPR Little Ideal 856

5 **DPR Miss 856 Ideal (TH32)**

Cow - TH32 Born: 2016 **7/16 BF 9/16 AN**

DPR Little Ideal 856
DPR Miss Fortune (56)
DPR Miss Classy (G690)
DPR Miss 6428 Grid (TH20)

TH32 – Those looking to pair up some powerful females, combining Lots 2 and 5 will do just that! A 5.5 frame cow that just screams true brood cow. A gentle disposition female that has raised a bull or replacement heifer in every progeny. An elite brood cow mated to DPR Sleep EZ BL269.

6 **DPR Miss 5644 Ideal (G757)**

Cow - G757 Born: 2016 **1/4 BF 3/4 AN**

DPR 856 Little Ideal 5644
DPR Mr Classy TH93
DPR Miss 5134 Super (Blue 19)

**Foundation Angus
(Schurrtop CY5)**

G757 – An outcross female stemming from Schurrtop Ranch. An extremely long bodied female that embodies productivity in her progeny. Dam's nurse ratio of 108/6. Dam's recent light birthweight bull sold for \$7,000 to Jim Ellicott.

7 **DPR Miss 237 Ruby's Gem (O294)**

Cow - O294 Born: 2019 **9/16 BF 7/16 AN**

DPR Ruby's Gem (B2 237)
DPR Miss 3242 Thunderbird (B2 23)
DPR Miss 361 Ali (O283)
DPR Mr Ali 361
DPR Miss Classy (O267)

O294 – Another do it all kind of cow. An extremely long made cow coming from three storied bloodlines. DPR Thunderbird 3242, DPR Miss Thunderbird BL 23 who is the dam of 2 active herd bulls, and DPR Mr. Ali 361. Dam's son sold in last year's sale for \$6,500 to the Wright Family, a long time repeat customer. Bred to DPR Expressway 1178.

8 **DPR Miss 6674 Solution (BL30)**

Cow - BL30 Born: 2020 **1/2 BF 1/2 AN**

DPR 9320 Solution 6674
DPR Miss Boone (Blue 29)
DPR Solution 9320
DPR Miss Ideal (667)
Mr. Boone
DPR Ms Outstanding 3159 (Blue 2)

BL30 – The youngest of the top 20 cows to sell today and that must mean something. She is GOOD! An ultra maternal female stemming from the Blue 2 cow who has left a strong legacy! DPR Miss Solution BL 30 is a light birth weight female mated to DPR Lookout 1113.

9 **DPR Miss 6022 Justice (O293)**

Cow - O293 Born: 2019 **9/16 BF 7/16 AN**

DPR 8141 Justice 6022
DPR Miss 9320 Solution (O281)
DPR Mr Justice 8141
DPR Miss Moneyman (602)
DPR Solution 9320
DPR Miss Double Ali (O208)

O293 – The first of the Justice Jr. 6022 daughters to sell and she is one you'll want to find. A long made, high volume female that packs it all together. Her recent bull calf weaned off grass at 734 pounds! Mated to a paternal brother, DPR Cash 1602 in the effort to add more genetic consistency.



DPR's excellent disposition while tagging calves!

10 **DPR Miss Impact (G827)**

Cow - G827 Born: 2020 **7/16 BF 9/16 AN**

DPR Impact BL 195
DPR Miss Grid (G608)
DPR Mr Classy TH93
DPR Miss 5134 Super (Blue 19)
DPR Mr Grid 47
DPR Miss 1938 Thick (G48)

G827 – A rare opportunity to combine blood of the Miss Grid 48 and Miss Choice 314. Miss Grid 48 has branched into 16 active females at DPR! Find this Impact Dam to be a proven cow and cow family. Be sure to find her heifer calf in the sale sired by DPR Expressway 1178.



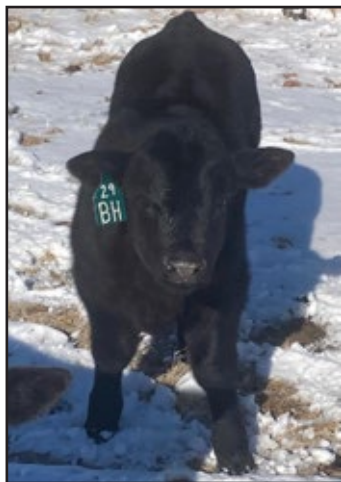
DPR Solution 9320 at age 10 in 2019

11 *DPR Miss Sleep EZ (G832)*

Cow - G832 Born: 2021 7/16 BF 9/16 AN

DPR 9320 Solution 6674 DPR Solution 9320
DPR Miss Ideal (667)
DPR Miss Grid (G608) DPR Mr Grid 47
DPR Miss 1938 Thick (G48)

G832 – Buying full siblings or ½ siblings is the recipe of building a cowherd! Take advantage of combining Lots 10 and 11! Miss Solution 6674 weaned off a 662 pound heifer calf as a 1st calver! A raw and unadjusted nurse ratio of 108!



*Calves with
Bone & Thickness*

12 *DPR Miss 3528 Justify (G835)*

Cow - G835 Born: 2021 3/8 BF 5/8 AN

DPR Justify 3528 DPR 8141 Justice 6022
DPR Miss Solution (352)
DPR Classy 5250
DPR Miss 9969 Rito (G740) DPR Miss Turepo (O229)

G835 – A highlight of the 2021 calf crop and can easily read the quality of this young female. Find her mother in Lot 2 and you'll see the foundation potential of this second calver! As a calf, she weaned off at 708 pounds and weaned her first calf off at 722 pounds!



DPR Justify 3528

13 *DPR Miss 6674 Solution (BL35)*

Cow - BL35 Born: 2020 1/2 BF 1/2 AN

DPR Solution 9320 Schurrtop 9447 C726
DPR Ms 1449 Thick (320)
DPR Miss 361 Ali (Blue 26) DPR Sleep EZ BL269
DPR Miss 47TKA 4390 (Blue 5)

BL35 – A special female offering of some of the best light birthweight blood at DPR. Sired by DPR Solution 6674 and stemming from the Miss Outstanding Female in Blue 5. Dam's birthweight ratio of 95/5 and nurse ratio of 106/5. A big bodied, powerful heifer that has donor cow written all over her!

14 *DPR Miss 3528 Justify (G830)*

Cow - G830 Born: 2021 3/8 BF 5/8 AN

DPR Justify 3528 DPR 8141 Justice 6022
DPR Miss Solution (352)
DPR Miss 9320 Solution (G768) DPR Solution 9320
DPR Miss Ideal (G667)

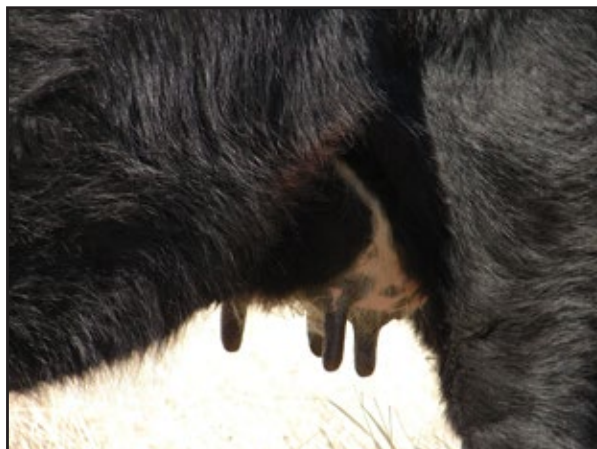
G830 – Another spectacular young female that crosses some of the best genetics of maternal value with terminal performance! Despite having a ton of growth genetics and terminal merit, these DPR Justify daughters are quickly finding their place as top producers! Find her dam in Lot 3 and maternal sister in Lot 24.

15 *DPR Miss 6645 Ruby (BL28)*

Cow - BL28 Born: 2017 3/8 BF 5/8 AN

DPR 506J Ruby's 6645 Ruby Lad 506J
DPR Miss Justice (G664)
DPR Miss 819 Moneyman (Blue 24) DPR Mr. Moneyman 819
DPR Miss Classy (Blue 17)

BL28 – A true brood cow that is two generations deep for growth! Purchase her and the mating to DPR Amplify, the trend of true performance cattle will continue! An additional plus, genetics stemming from her dam, Miss Moneyman Blue 24 are the most docile genetics at DPR!



Cows with Quality Udders!

18 DPR Miss 2776 Solution (O311)

Cow - O311

Born: 2021

9/16 BF 7/16 AN

DPR Total Solution 2776 DPR 9320 Solution 6674
DPR Miss Classy (O277)
DPR Miss 361 Ali (O289) DPR Mr Ali 361
DPR Miss Classy (O262)

O311 – If you haven't noticed, there are some very strong cow families in these top 20 females selling. This Total Solution female fits right into that mold. Tracing back to Miss Grid 48, this light birth weight female has all the pieces of being special.

19 DPR Miss Ruby's Gem (G792)

Cow - G792

Born: 2018

7/16 BF 9/16 AN

DPR 506J Ruby's 6645 Ruby Lad 506J
DPR Miss Justice (G664)
DPR Miss 9320 Solution (G674) DPR Solution 9320
DPR Miss Classy (O262)

G792 – Another cow that comes back to the famous Miss Grid 48 through her productive dam of Miss Classy 262, the dam of Lot 18. A long spined, growthy female that sires extra performance. This past year weaning a 692 pound bull calf! Combine Lots 15 and 19 as ½ sisters and you'll inject growth to your cowherd.

16 DPR Miss 3528 Justify (O302)

Cow - O302

Born: 2020

7/16 BF 9/16 AN

DPR Justify 3528 DPR 8141 Justice 6022
DPR Miss Solution (352)
DPR Miss Jet (O272) OCC Jet Stream 373X
DPR Miss 6150 Little Ideal (O301)

O302 – Another young Justify daughter in the top 20 of the females at DPR! A fabulous young cow that embodies the same qualities as Lots 12 and 14. Find this female double bred back to Justify as she carries a calf sired by DPR Amplify! Long and powerful are the name of the game in this mating!

17 DPR Miss Impact (G779)

Cow - G779

Born: 2018

3/8 BF 5/8 AN

DPR Impact BL 195 DPR Mr Classy TH93
DPR Miss 5134 Super (Blue 19)
DPR Miss Solution (G354) Schurrtop 9447 726
DPR Miss Choice (O314)

G779 – Those who are looking for volume, volume, and more volume need to star this cow. An absolute truck of a female that sets wide at the ground and is one of the easiest fleshing cows at DPR. Add in her lineage ties back to DPR Miss Choice 314, she's a foundational breeding piece!

20 DPR Miss GMS (BL27)

Cow - BL27

Born: 2017

3/4 BF 1/4 AN

Gest Maurtis GMS Fullblood BF
DPR Miss 5250 Classy (Blue 20) DPR Classy 5250
DPR Ms. Outstanding 3159 (Blue 2)

BL27 – A rare offering of some original Beef Friesian blood in GMS! A ¾ blood that has an unbelievable track record of weaning calves 700+ while breeding back! Dam's BW Ratio – 100 with a nurse ratio of 109/5.

Uniformity and consistency with proven predictability does **NOT** come by accident. It takes 4-5 generations of stacking similar genetics within cow families and **NOT** genomically analyzed **DNA** to provide predictability!

DUSTY PRAIRIE RANCH
provides this Predictability!!

Fire too close for comfort -- Spring 2022





DPR Miss 6349 Moneyman 602
DPR Cash 1602 will sire several 2024 calves



2nd Calf Pair

Lot 21

DUSTY PRAIRIE RANCH

Blue 23

DPR Mr. Thunderbird 3242
DPR Miss 5250 Classy (BL20)

Born: 2014
Bred to: DPR Sleep EZ BL269

Blue 24

DPR Mr. Moneyman 819
DPR Miss Classy (BL17)

Born: 2014
Bred to: DPR Sleep EZ BL269

Blue 25

DPR 6290 Mr. Moneyman 1501
DPR Miss 6290 Moneyman (BL18)

Born: 2015
Bred to: DPR Sleep EZ BL269

G720

DPR Mr. Ali 361
DPR Miss 6428 Grid (G35)

Born: 2014
Bred to: DPR Sleep EZ BL269

BR 7

DPR 9320 Solution H174
DPR Miss Sleep At Night (BR44)

Born: 2017
Bred to: DPR Sleep EZ BL269

Lot 23

DUSTY PRAIRIE RANCH

BK 126

DPR Super G 0102
DPR Miss 9320 Solution (BK126)

Born: 2022
Bred to: See sale day supplement

BK129

DPR Impact BL195
DPR Miss 5644 Ideal BK129

Born: 2022
Bred to: See sale day supplement

BK153

DPR Super G 0102
DPR Miss Impact (BK153)

Born: 2022
Bred to: See sale day supplement

BK253

DPR Super G 0102
DPR 5250 Classy (BK253)

Born: 2022
Bred to: See sale day supplement

BK770

DPR Super G 0102
DPR Miss 361 Ali (G770)

Born: 2022
Bred to: See sale day supplement

Lot 22

DUSTY PRAIRIE RANCH

Blue 23

DPR Justify 3528
DPR Miss 3242 Thunderbird (BL23)

Born: 2022
Bred to: See sale day supplement

Blue 24

DPR Impact BL195
DPR Miss 819 Moneyman BL24

Born: 2022
Bred to: See sale day supplement

Blue 26

DPR 9320 Solution 6674
DPR Miss 361 Ali (BL26)

Born: 2022
Bred to: See sale day supplement

TH31

DPR Justify 3528
DPR Miss 3242 Thunderbird (TH31)

Born: 2022
Bred to: See sale day supplement

O289

DPR 9320 Solution 6674
DPR Miss 361 Ali (O289)

Born: 2022
Bred to: See sale day supplement

Lot 24

DUSTY PRAIRIE RANCH

TH29

DPR Total Solution 2776
DPR Miss 9320 Solution TH29

Born: 2022
Bred to: See sale day supplement

O262H

DPR Sleep EZ BL269
DPR Miss 6674 Solution (O303)

Born: 2022
Bred to: See sale day supplement

G760

DPR Impact BL195
DPR Miss 9320 Solution (G760)

Born: 2022
Bred to: See sale day supplement

G768

DPR Little Ideal 856
DPR Miss 9320 Solution (G768)

Born: 2022
Bred to: See sale day supplement

45 Years of Memories



1990 Western Stock Show



1991 Western Stock Show



1992 Western Stock Show





2024 Sale Bull



DPR Impact



757 Cow's 2023 Bull



DPR receives Reserve Champion Pen of Females at Bassett Ranch Expo





H C DUSTY PRAIRIE RANCH

Thank You



Lot 25

DUSTY PRAIRIE RANCH

TH35H

DPR Sleep EZ BL269
DPR Miss 3528 Justify (TH40)

Born: 2022

BR7

DPR 9320 Solution 6674
DPR Miss TH17 Solution (BR7)

Born: 2022

BK104

OCC Jetstream 373X
DPR Miss 3242 Thunderbird (BK104)

Born: 2022

BK164

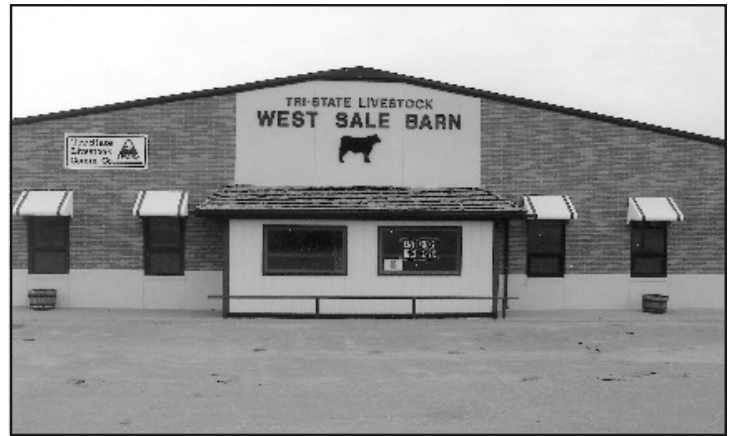
DPR Mr. Dynamic B257
DPR Miss 5644 Ideal (BK164)

Born: 2022

BK774

DPR Extra Easy 0720
DPR Miss 3195 Rito (0774)

Born: 2022



*Sale Location —
Tri-State Livestock*

Lot 26

DUSTY PRAIRIE RANCH

Blue 31

DPR 9320 Solution 6674
DPR Miss GMS (BL27)

Born: 2020

Bred to: DPR Lockout 1113

Blue 32

DPR Mr. Dynamic BL257
DPR Miss 5250 Classy (BL23)

Born: 2020

Bred to: DPR Sleep EZ BL269

Blue 34

DPR Mr Thunderbird 3242
DPR Miss 1501 Moneyman (BL25)

Born: 2020

Bred to: DPR Cash 0602

O298

DPR 9320 Solution 6674
DPR Miss 3195 Rito (O285)

Born: 2020

Bred to: DPR Sleep EZ BL269

O303

DPR 9320 Solution 6674
DPR Miss 5250 Classy (O262)

Born: 2020

Bred to: DPR Lookout 1113

Lot 27

DUSTY PRAIRIE RANCH

Blue 36

DPR Impact BL195
DPR Miss 819 Moneyman (BL24)

Born: 2021

Bred to: DPR Cash 0602

Blue 37

DPR Justify 3528
DPR Miss 9320 Solution (BL22)

Born: 2021

Bred to: DPR Ruby's Gem B237

Blue 38

DPR Justify 3528
DPR Miss 1501 Moneyman (BL25)

Born: 2021

Bred to: DPR Sleep EZ BL269

O305

DPR Eclipse 2848
DPR Miss 361 Ali (O292)

Born: 2021

Bred to: DPR Expressway B1178

G834

Shander Ali
SAV Emblynnette 9896

Born: 2021

Bred to: DPR Cash 0602



*2nd Calf Cows
Mothering Calves in Bad Weather*

Lot 28

DUSTY PRAIRIE RANCH

O304

DPR 9320 Solution 6674
DPR Miss 361 Ali (O283)

Born: 2021

Bred to: DPR Mr. Stunner 090

TH41

OCC Jetstream 373X
DPR Miss 6674 Solution (H36)

Born: 2021

Bred to: DPR Ruby's Gem B237

G842

DPR 9320 Solution 6674
DPR Miss 9320 Solution (G769)

Born: 2021

Bred to: DPR Amplify BL123

G843

DPR 9320 Solution 6674
DPR Miss 9320 Solution (G739)

Born: 2021

Bred to: DPR Amplify BL123

O296

DPR 9320 Solution 6674
DPR Miss 361 Ali (270)

Born: 2020

Bred to: DPR Sleep EZ BL269

Lot 29

DUSTY PRAIRIE RANCH

G0309

DPR Mr. Ali 361
DPR Miss Dynamic (282)

Born: 2021
Bred to: DPR Ruby's Gem B237

G836

DPR Impact BL195
DPR Miss 5134 Super (G614)

Born: 2021
Bred to: DPR Ruby's Gem B237

G813

DPR Impact B195
DPR Miss Solution (674)

Born: 2020
Bred to: DPR Ruby's Gem B237

G831

Gest Maurtis GMS
Ideal 1327 of 7773 Blackbird (Y3)

Born: 2021
Bred to: DPR Ruby's Gem B237

G841

DPR Impact BL195
DPR Miss 9320 Solution (G760)

Born: 2021
Bred to: DPR Sleep EZ BL269



Austin, Holdyn, Kaylee, Kylyn, Jaylin, and Cayden

Lot 30

DUSTY PRAIRIE RANCH

BK189

DPR Mr. Dynamic B257
DPR Miss 6674 Solution (151)

Born: 2020
Bred to: DPR Expressway 1178

BK210

DPR Eclipse 2848
DPR Miss Impact (165)

Born: 2021
Bred to: DPR Dynamic B2670

BK216

OCC Jetstream 373X
DPR Miss 6674 Solution (185)

Born: 2021
Bred to: DPR Expressway 1178

BK202

DPR 9320 Solution 6674
DPR Miss 9320 Solution (140)

Born: 2020
Bred to: DPR Lookout 1113

BK212

DPR 9320 Solution 6674
DPR Miss 6645 Ruby (146)

Born: 2021
Bred to: DPR Amplify BL123

Lot 32

DUSTY PRAIRIE RANCH

O299

DPR Justify 3528
DPR Miss 373 Jetstream (276)

Born: 2020
Bred to: DPR Amplify B123

O301

DPR Eclipse 2848
DPR Miss 361 Ali (292)

Born: 2020
Bred to: DPR Amplify B123

G817

DPR Mr. Dynamic B257
DPR Miss 6645 Ruby's (776)

Born: 2020
Bred to: DPR Cash 0602

O300

DPR 9320 Solution 6674
DPR Miss Ideal (349)

Born: 2020
Bred to: DPR Sleep EZ B269

TH40

DPR Justify 3528
DPR Miss 856 Ideal (TH35)

Born: 2020
Bred to: DPR Ruby's Gem B237

Lot 31

DUSTY PRAIRIE RANCH

BK190

DPR Impact B195
DPR Miss 9320 Solution (100)

Born: 2020
Bred to: DPR Lockout 1113

BK207

DPR Impact B195
DPR Miss Thunderbird (672)

Born: 2021
Bred to: DPR Dynamic B2670

BK209

DPR Justify 3528
DPR Miss 9669 Rito (149)

Born: 2021
Bred to: DPR Dynamic 2670

BK200

DPR Impact B195
DPR Miss Classy (317)

Born: 2020
Bred to: DPR Expressway 1178

BK208

DPR Impact 6729
DPR Miss 361 Ali (156)

Born: 2021
Bred to: DPR Dynamic B2670

Lot 33

DUSTY PRAIRIE RANCH

G815

DPR Ruby's Solution 5567
DPR Miss 9320 Solution (766)

Born: 2020
Bred to: DPR Ruby's Gem B237

G823

DPR Impact B195
DPR Miss 5134 Super (615)

Born: 2020
Bred to: DPR Ruby's Gem B237

G828

DPR Solution 9320
DPR Miss 5342 Carcass (702)

Born: 2020
Bred to: DPR Amplify B123

G820

DPR 9320 Solution 6674
DPR Miss 3140 Profitability (708)

Born: 2020
Bred to: DPR Sleep EZ B269

G825

DPR 9320 Solution 5907
DPR Miss 2295 Ideal (722)

Born: 2020
Bred to: DPR Amplify BL123



G820 — DPR 9320 Solution 6674 Daughter

Lot 34

DUSTY PRAIRIE RANCH

G798

DPR 2295 Ideal 3546
DPR Miss Turepo (721)

Born: 2019
Bred to: DPR Impact B195

Blue 33

DPR 9320 Solution 6674
DPR Miss 6645 Ruby (Blue 28)

Born: 2020
Bred to: DPR Amplify B123

TH38

DPR 2295 Solution 3546
DPR Miss 1501 Moneyman (H30)

Born: 2019
Bred to: DPR Impact B195

G799

DPR Solution 9320
DPR Miss 2295 Ideal (722)

Born: 2019
Bred to: DPR Amplify B123

G808

DPR 9320 Solution 6674
DPR Miss Solution (354)

Born: 2019
Bred to: DPR Cash 0602

Lot 35

DUSTY PRAIRIE RANCH

G802

DPR 506J Ruby's 6645
DPR Miss Ideal 588

Born: 2019
Bred to: DPR Impact BL195

G806

DPR Solution 9320
DPR Miss H3140 Profitability (692)

Born: 2019
Bred to: DPR Impact BL195

BH33

DPR Ruby's Gem B237
DPR Miss 9320 Solution (BH27)

Born: 2019
Bred to: DPR Impact BL195

G805

DPR Mr. Ali 361
Ideal 1327 of 7773 Blackbird (Y3)

Born: 2019
Bred to: DPR Ruby's Gem B237

BR9

DPR Total Solution 2776
DPR Miss TH17 Solution (BR7)

Born: 2019
Bred to: DPR Sleep EZ BL269

Lot 36

DUSTY PRAIRIE RANCH

O283

DPR Mr. Ali 361
DPR Miss Classy (267)

Born: 2016
Bred to: Open Recip

O295

DPR Mr. Ali 361
DPR Miss 6674 Solution (282)

Born: 2019
Bred to: Open Recip

O797

DPR 506J Ruby's 6645
DPR Miss 381 Ideal (355)

Born: 2019
Bred to: Open Recip

O288

DPR Solution 9320
DPR Miss 9320 Solution (277)

Born: 2018
Bred to: Open Recip

G775

DPR 856 Little Ideal 8644
DPR Miss TH93 Thick (659)

Born: 2017
Bred to: Open Recip

Lot 37

DUSTY PRAIRIE RANCH

BK166

DPR 2295 Ideal 3546
DPR Miss 9320 Solution (115)

Born: 2018
Bred to: DPR Mr. Stunner 090

BK180

DPR Total Solution 2776
DPR Miss Jet (143)

Born: 2019
Bred to: DPR Lookout 1113

BK198

DPR 9320 Solution 6674
DPR Miss Classy (BK4)

Born: 2020
Bred to: DPR Ruby's Gem B237

BK173

DPR 9320 Solution 6674
DPR Miss 9320 Solution (100)

Born: 2018
Bred to: DPR Mr. Stunner 090

BK181

DPR 9320 Solution 6674
DPR Miss 3242 Thunderbird 104

Born: 2019
Bred to: DPR Expressway 1178



Gavin visiting with cattlemen at the Valentine Bull Bash!



G771 Cow on Summer Grass

Lot 38

DUSTY PRAIRIE RANCH

G771

DPR Slide-N-Out BR523
DPR Miss Justice (664)

Born: 2017
Bred to: DPR Amplify B123

G787

DPR 506J Ruby 6645
DPR Miss Grid (653)

Born: 2018
Bred to: DPR Impact B195

NH21

DPR 8141 Justice 6022
DPR (NH17)

Born: 2019
Bred to: DPR Impact B195

G772

DPR 9969 Rito 3195
DPR Miss 2295 Ideal (722)

Born: 2017
Bred to: DPR Amplify B123

G788

DPR 9969 Rito 3195
DPR Miss 2295 Ideal 722

Born: 2018
Bred to: DPR Amplify B123

Lot 39

DUSTY PRAIRIE RANCH

BK139

DPR Solution 9320
DPR Miss Classy (317)

Born: 2017
Bred to: DPR Supercell 2113

BK155

DPR Impact B195
DPR Miss 47 Grid (108)

Born: 2018
Bred to: DPR Mr. Stunner 090

BK168

DPR 9969 Rito 3159
DPR Miss 2295 Ideal 268

Born: 2018
Bred to: DPR Dynamic 2670

BK152

DPR 8141 Justice 6022
DPR Miss 819 Moneyman (BK21)

Born: 2018
Bred to: DPR Mr. Stunner 090

BK159

DPR 9320 Solution 6674
DPR Miss 5644 Ideal 128

Born: 2018
Bred to: DPR Dynamic 2670

Lot 40

DUSTY PRAIRIE RANCH

O286

DPR Solution 9320
DPR Miss Classy (246)

Born: 2017
Bred to: DPR Impact B195

G767

DPR Solution 9320
DPR Miss Super 5134 (615)

Born: 2017
Bred to: DPR Ruby's Gem B237

TH36

DPR 9320 Solution 6674
DPR Miss 856 Ideal (TH32)

Born: 2016
Bred to: DPR Amplify BL123

G766

DPR Solution 9320
DPR Miss 6290 Moneyman (678)

Born: 2017
Bred to: DPR Cash 0602

G769

DPR Solution 9320
DPR Miss 9320 Solution 605

Born: 2017
Bred to: DPR Amplify B123

Lot 41

DUSTY PRAIRIE RANCH

O289

DPR Mr. Ali 361
DPR Miss Classy (262)

Born: 2018
Bred to: DPR Expressway 1178

G747

DPR Sleep-At-Night B523
DPR Miss 2295 Ideal (161)

Born: 2016
Bred to: DPR Impact B195

NH19

DPR Solution 9320
DPR Miss Little Ideal (NH10)

Born: 2016
Bred to: DPR Lookout 1113

G763

DPR Little Ideal 856
DPR Miss 726 Solution (580)

Born: 2017
Bred to: DPR Ruby's Gem B237

G783

DPR Mr. Ali 361
DPR Miss 819 Moneyman (742)

Born: 2018
Bred to: DPR Ruby's Gem B237



Lot 42

DUSTY PRAIRIE RANCH

BK122DPR 9320 Solution 6674
DPR Miss Ali (720)Born: 2016
Bred to: DPR Mr. Stunner 090**BK148**DPR 9320 Solution 6674
DPR Miss TH93 Classy (114)Born: 2017
Bred to: DPR Mr. Stunner 090**BK161**DPR Total Solution 2776
DPR Miss 6674 Solution (122)Born: 2018
Bred to: DPR Mr. Stunner 090**BK137**DPR Mr. Classy TH93
DPR Miss (BL17)Born: 2017
Bred to: DPR Dynamic 2670**BK150**DPR Little Ideal 856
DPR Miss 3130 Sleep-At-Night (604)Born: 2017
Bred to: DPR Mr. Stunner 090**Lot 45**

DUSTY PRAIRIE RANCH

O276DPR OCC Jetstream 373X
DPR Miss Classy (267)Born: 2014
Bred to: DPR Sleep EZ BL269**G770**DPR Mr. Ali 361
Ideal 327 of 7773 (Y3)Born: 2017
Bred to: DPR Sleep EZ BL269**NH20**DPR 506J Ruby's 6645
DPR Miss Ali (NH14)Born: 2017
Bred to: DPR Amplify BL123**G736**DPR Solution 9320
DPR Miss 9320 Solution (G683)Born: 2014
Bred to: DPR Sleep EZ BL269**G774**DPR 9969 Rito 3195
DPR Miss H3140 Profitability (G40)Born: 2017
Bred to: DPR Sleep EZ BL269**Lot 43**

DUSTY PRAIRIE RANCH

BK101DPR Ali 362
DPR Miss 362 Ali (B101)Born: 2015
Bred to: DPR Mr. Stunner 090**BK117**DPR Mr. Ali 361
DPR Miss 5134 Super (GH7)Born: 2016
Bred to: DPR Expressway 1178**BK142**DPR Little Ideal 856
DPR Miss 5250 Classy (265)Born: 2017
Bred to: DPR Dynamic 2670**BK109**DPR Mr. Thunderbird 3242
DPR Miss 9320 Solution (0271)Born: 2015
Bred to: DPR Expressway 1178**BK129**DPR 856 Little Ideal 5644
DPR Miss Classy (GH10)Born: 2016
Bred to: DPR Expressway 1178**Lot 46**

DUSTY PRAIRIE RANCH

G688DPR Moneyman 6290
DPR Miss Thick (411)Born: 2012
Bred to: DPR Ruby's Gem B237**G692**DPR Super 5134
DPR Miss Turepo (392)Born: 2012
Bred to: DPR Ruby's Gem B237**G674**DPR Solution 9320
DPR Miss 5134 Super (G26)Born: 2012
Bred to: DPR Ruby's Gem B237**Lot 44**

DUSTY PRAIRIE RANCH

G742DPR Little Ideal 819
DPR Miss Ideal (588)Born: 2015
Bred to: DPR Cash 1602**O277**DPR Solution 9320
DPR Miss Ideal (349)Born: 2014
Bred to: DPR Amplify B123**NH19**DPR Solution 9320
DPR Miss Solution (106)Born: 2016
Bred to: DPR Lookout 1113**Blue 22**DPR Solution 9320
DPR Miss 5134 Super (BL19)Born: 2014
Bred to: DPR Amplify B123**Lot 47**RED COWS
DUSTY PRAIRIE RANCH**O287**DPR Solution 9320
DPR Miss 6674 Solution (314)Born: 2018
Bred to: DPR Ruby's Gem B237**G738**DPR Solution 9320
DPR Miss 381 Ideal (355)Born: 2015
Bred to: DPR Ruby's Gem B237

Thank You For Your Cow Purchases!!

Take our genetics to the
Next Level and continue
what I started in 1978!

Look at Semen Directory
on page 20



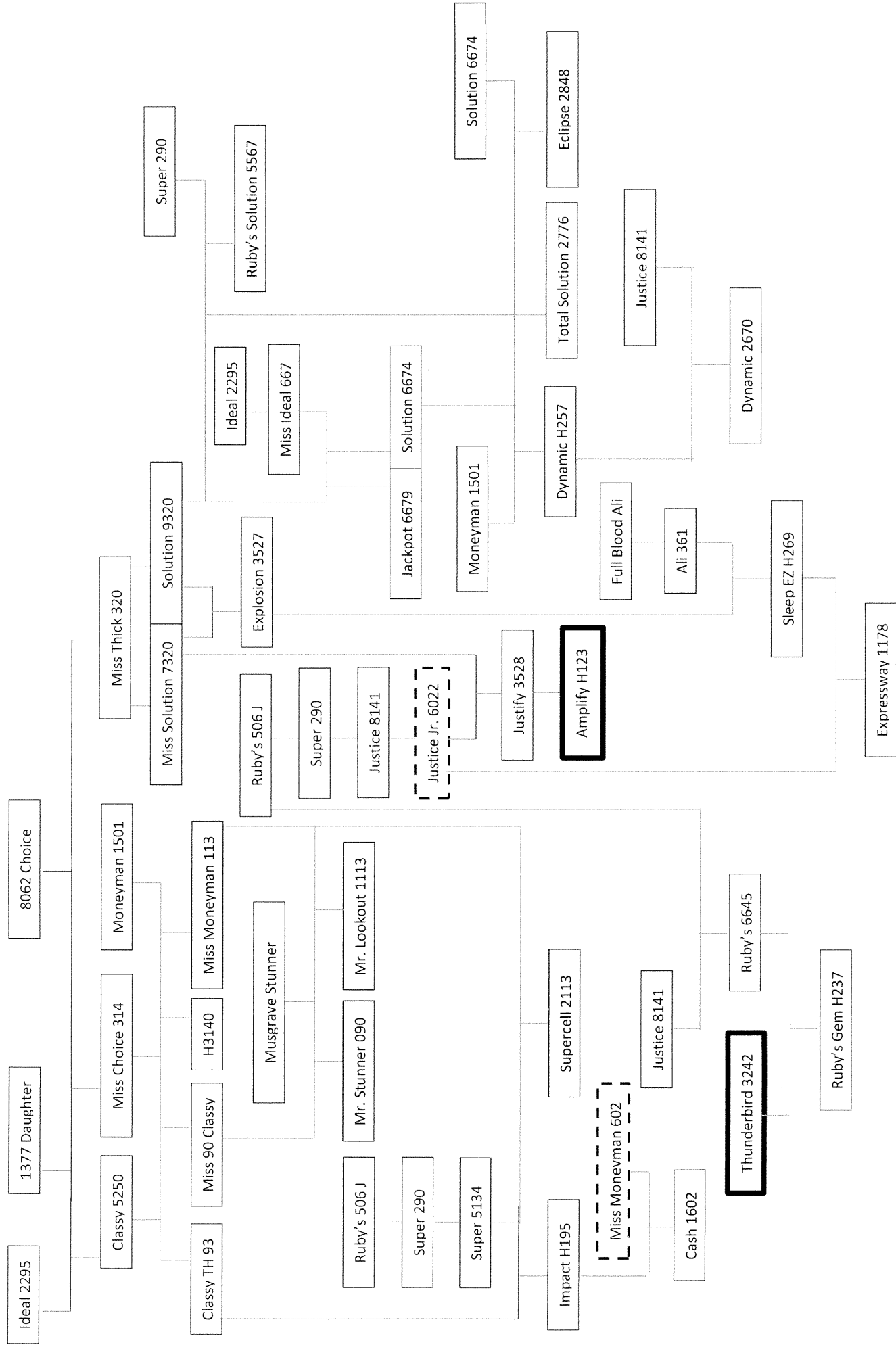
DUSTY PRAIRIE RANCH HEIFERS

As a seedstock producer, we, at the Dusty Prairie Ranch, focus on calving ease and maternal traits. We're developing these heifers as we would for our own replacements. Our heifers are fed a growing ration that consists of silage, dry hay, protein and 0-2 pounds of corn (depending on weather conditions). The heifers run on a 15 acre lot.

Lot 48 Top Group of 2023 Heifers

Lot 49 Next Group of Top Heifers, Gate Cut 5 or More

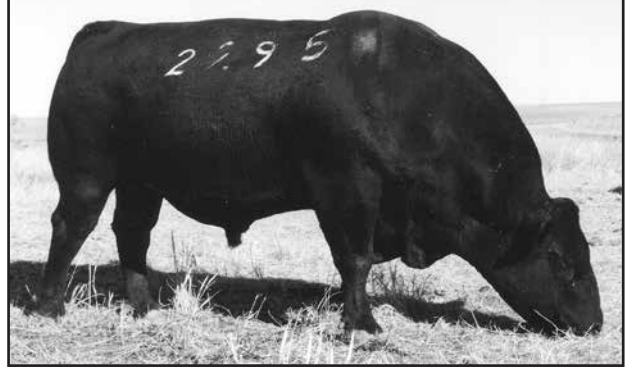
Lot 50 Late March-April Born 2023 Heifers



DUSTY PRAIRIE SEMEN DIRECTORY



DPR Mr Thick 2022



DPR Ideal 692 of 2295

Polled Turepo 1377: A purebred Beef Friesian bull that has done more for DPR than any bull we've ever used. His progeny will improve udders and add fertility and disposition. Our winning pen at Great Western Beef Expo was out of 1377 daughters.

DPR Mr. Thick 2022: Mr. Thick will sire deep ribbed volume cattle. One trait the thick cattle will give you is more 5.00 lb. gaining cattle than any other bull we have used.

DPR Solution 9320: If you are looking for a **Total Balanced** bull, 9320 is at the top of the list. Smaller calves at birth and great females that stay on schedule year after year. Bull was used in natural service at age 10.

DPR 9320 Solution 6674: The most proven son out of 9320. He is used on heifers for calving ease and sires deep ribbed, embryo flushing genetics.

DPR Ideal 692 of 2295: A moderate framed herd bull that has a tremendous amount of thickness and volume. His females are top producers at Dusty Prairie Ranch.

DPR 1st Choice 8062: Gymnast genetics are known for great maternal females...great udders with lots of fertility plus calving ease.

DPR Mr. Ali 361: Calving ease bull out of Shandon Ali genetics. His progeny are moderate framed, good feet and legs with **Super Nice Udders**. His dam was producing at 15 years of age.

DPR Big Red 0150: A red bull with lots of depth and rib. 0150 females are of top quality with the Gymnast genetics.

DPR Little Ideal 856: A grandson out of our foundation cow, DPR Miss Banker 81. Bull that will add tons of volume and width.

DPR Super 5134: Bull with genetics to add tons of depth and volume. His gene pool sires the most overall growth and size at Dusty Prairie Ranch.

★ **Dusty Prairie Ranch has semen on over 25 other bulls if you need to genetically match a certain cow for a flush.**

★ **Semen prices vary from \$25 - \$100 depending on the bull and volume.**

Remember

Quality Is

Always A Bargain!!



Dusty Prairie Ranch Sale Day

SALE TERMS AND CONDITIONS

Terms: Terms of the sale are cash or check, payable immediately upon conclusion of the sale and before animals will be moved. Seller will reserve the right to require a certified check as settlement before releasing any cattle.

Risk: All animals are the seller's risk prior to their sale and become property of the purchaser as soon as declared sold by the auctioneer.

Bidding: All animals sell to the highest bidder. Any disputes or challenges regarding bids will be settled by the auctioneer, and his decision will be final.

Health: All bulls have been tested and found negative for brucellosis. All females have been officially calfhood vaccinated. All animals are eligible for interstate shipment; except as otherwise announced. The Veterinarian will assist buyers on health papers for specific states.

Announcements: Any changes from information of any kind in this catalog will be announced from the auction box and such announcements shall take precedence.

Breeding Guarantee: Females: Cows represented as being "safe in calf" will have been examined and declared safe; they are considered bred without further guarantee. Cows with calves at side shall be considered breeders also without further guarantee. Open heifers are guaranteed to be breeders. **NO** guarantee shall apply to suckling calves. **NO** guarantee is given that bred females will deliver a live calf.

Bulls: Should any bull 14 months of age or over fail to prove a breeder after being used on cows known to be breeders, the matter shall be reported in writing to the seller within six months following date of purchase, or six months after the bull has reached fourteen months of age. (See Options and Privileges of Return or Adjustment.)

All animals are guaranteed to be breeders with the exception of: (a) Calves under twelve months of age. (b) Animals shown by purchaser after sale. (c) Injury or disease occurring after sale. (d) Animals subjected to any hormonal or surgical reproduction techniques. (e) Gross negligence or willful misconduct on the part of the purchaser. (f) Artificial collection, preparation or storage of semen.

Options and Privileges of Return or Adjustment:

1. All claims for adjustment or refund must be made in writing within six months of sale date or no later than six months after the animal reaches 14 months of age.
2. Any animal that appears to be a non-breeder within six months after date of sale, if in healthy condition and complying with the health requirements of the seller's state, may be returned to the seller at the buyer's expense. Seller will then reserve the right to prove the animal a breeder within a six-month period. If successful, the seller will return the animal to the buyer at the buyer's expense. Should the animal fail to prove a breeder, the seller, at his option, may either return purchase price to buyer or replace the animal with another of equal value in full settlement and satisfaction of all claims. In no event shall seller be responsible for more than the purchase price.

Accidents: Although every precaution will be taken to protect the safety and comfort of the buyers and others attending the sale, neither Dusty Prairie Ranch nor anyone associated with the sale, shall assume any responsibility in this matter and each disclaims any liability, legal or otherwise, in the event of an accident or loss of property.

Contract: The above Sale Terms and Conditions shall constitute a contract between buyer and seller and be equally binding on both. Animals that are resold following purchase in this sale shall constitute a separate transaction and the rights and obligations of the two parties connected thereto are not covered by these Terms and Conditions.

Dusty Prairie Ranch

Doug Harsh

71594 Rd. 404

Bartley, NE 69020

FIRST CLASS

Dusty Prairie Ranch



★ ***Retirement Female Sale*** ★

200+ Head

Saturday, Decemer 9, 2023

1:00 PM (Central Time)

www.dustyprairieranch.com